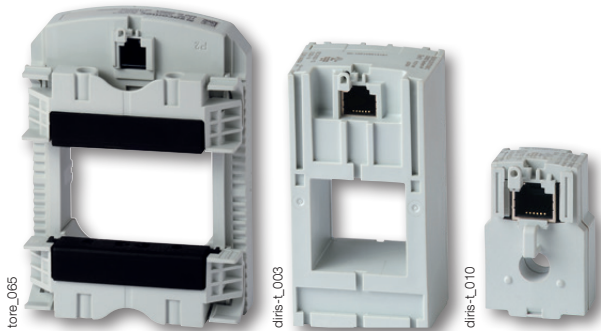


# TE sensors

## Solid current sensors

used with DIRIS Digiware I, DIRIS A-40, DIRIS B and ISOM Digiware F-60



TE solid sensors

### The solution for

- > Industry
- > Building
- > Infrastructure
- > Data center



### Strong points

- > Plug & Play
- > Accuracy as per standard IEC 61557-12
- > Installation

### Conformity to standards

- > IEC 61557-12



- > ISO 14025



- > UL



### Create your project

- > Find the best DIRIS Digiware configuration:  
[www.meter-selector.com](http://www.meter-selector.com)



### Function

TE smart **current sensors** measure the load currents of an electrical system and send the data to meters and measurement hubs via an RJ12 plug-and-play output. Thanks to a wide measurement range, TE current sensors cover the full current range of 5 to 2000 A, with 7 references. TE solid current sensors can be connected to DIRIS Digiware I, DIRIS A-40, DIRIS B and ISOM Digiware F-60 via a rapid RJ12 connection.

Numerous accessories are available to aid the installation of sensors in any type of cabinet.

### Advantages

#### Plug & Play

- A rapid RJ12 connection makes wiring easy and reliable and prevents wiring errors. This also allows automatic detection of the sensor type and size/transformation ratio.
- The sensors can be installed in both directions.

#### Accuracy as per standard IEC 61557-12

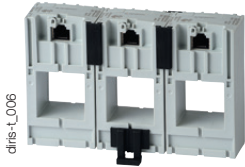
- Class 0.5 for the global measuring chain (measurement hub + TE current sensors) from 2 to 120% of the nominal current  $I_n$ .

#### Installation

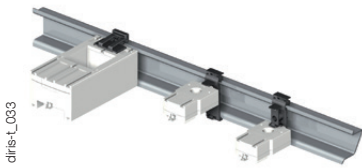
- The TE solid sensor range is specially designed for new installations, and has the same pitch as the most common protective devices.

## Mounting

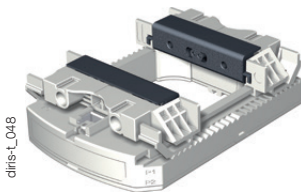
Linear assembly with the protective devices  
TE-25 / TE-35 / TE-45 / TE-55 / TE-90



DIN rail mounted



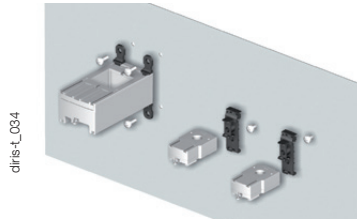
TE-90 clamps



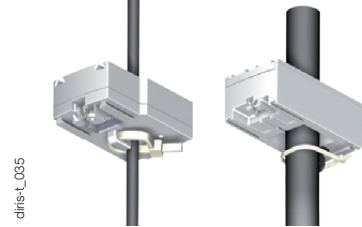
Staggered assembly  
TE-18 / TE-35 / TE-45 / TE-55



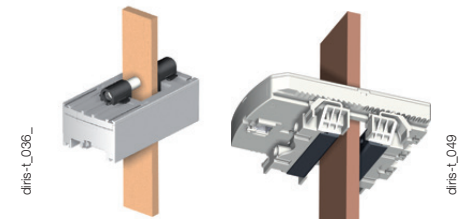
Back-plate mounting



Cable mounting

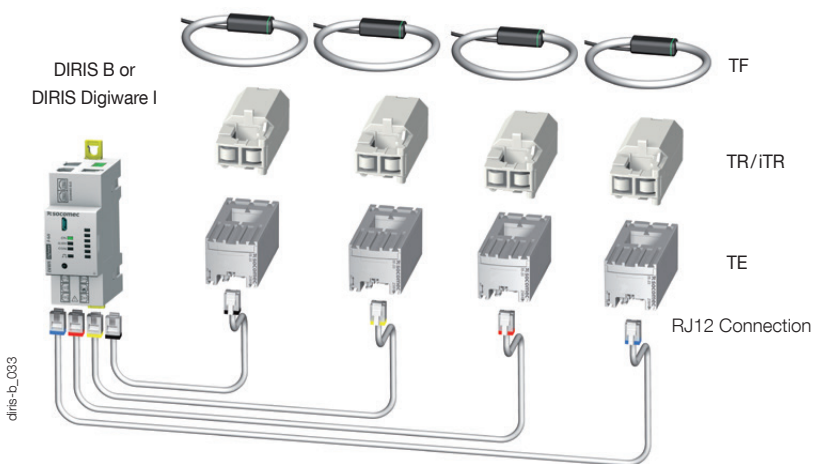


Bar mounting



## Connections

TE / TR / ITR / TF current sensors




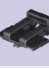


# TE sensors

## Solid current sensors

used with DIRIS Digiware I, DIRIS A-40, DIRIS B and ISOM Digiware F-60

### Mounting accessories

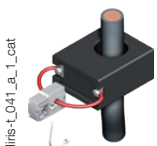
Mounting accessories delivered with TE sensors:

Switch mounting		TE-18	TE-25	TE-35 TE-45 TE-55	TE-90
	DIN rail and back-plate	1 pc			2 pcs
	DIN rail		2 pcs	2 pcs	
	Back-plate		4 pcs	4 pcs	6 pcs
	Busbar			2 pcs	

diris-t\_042\_a - 043\_a - 044\_a - 045\_a

### Compatible accessories

#### Adapter for CT with 5A secondary

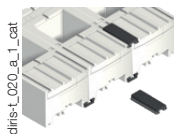


diris-t\_041\_a\_1\_cat

- With this adapter you can use a current transformer with a 1 A or 5 A output on DIRIS Digiware I, DIRIS B and DIRIS A-40. For use with 5 A CTs (measurement up to 10 000 A) or 1 A CTs (measurement up to 2000 A). The dimensions are the same as the TE-18.

#### Coupling link

- Associated with the TE range, this accessory is for inter-connecting the sensors when linear or staggered mounted.

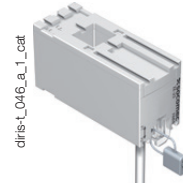


diris-t\_020\_a\_1\_cat



#### Sealable cover

- Using a sealable cover guarantees the immunity of the sensor connection on TE/TR/iTR/ TF current sensors.

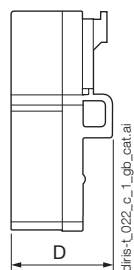
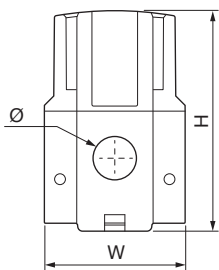


diris-t\_046\_a\_1\_cat

### Dimensions (mm)

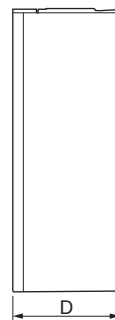
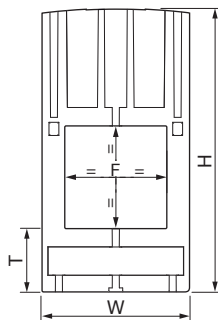
#### TE - Solid current sensors

TE-18



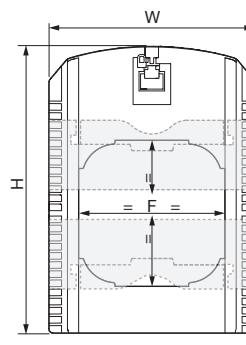
diris-t\_022\_c\_1\_gb\_cat.ai

TE-25 / TE-35 / TE-45 / TE-55

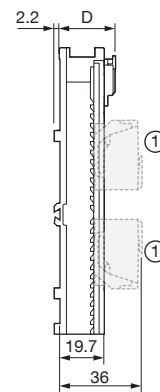


diris-t\_023\_c\_1\_gb\_cat.ai

TE-90



1. Switch mounting



diris-t\_047\_b\_1\_gb\_cat.ai

Model	Nominal current range (A)	Real range covered (A)	Pitch (mm)	H x W x D (mm)	F (mm)	T (mm)
TE-18	5 ... 20 / 25 ... 63	0.1 ... 24 / 0.5 ... 75	18	45 x 28 x 20	8.6	-
TE-25	40 ... 160	0.8 ... 192	25	65 x 25 x 32.5	13.5 x 13.5	17.5
TE-35	63 ... 250	1.26 ... 300	35	71 x 35 x 32.5	21 x 21	17.5
TE-45	160 ... 630	3.2 ... 756	45	86 x 45 x 32.5	31 x 31	19.5
TE-55	400 ... 1000	8 ... 1200	55	100 x 55 x 32.5	41 x 41	21.5
TE-90	600 ... 2000	12 ... 2400	90	126 x 90 x 24.6	64 x 64	-

## Specifications

TE - Solid current sensors							
Model	TE-18	TE-18	TE-25	TE-35	TE-45	TE-55	TE-90
Nominal current range $I_n$ (A)	5 ... 20	25 ... 63	40 ... 160	63 ... 250	160 ... 630	400 ... 1000	600 ... 2000
Real range covered (A)	0.1 ... 24	0.5 ... 75	0.8 ... 192	1.26 ... 300	3.2 ... 756	8 ... 1200	12 ... 2400
Max. current (A)	24	75.6	192	300	756	1200	2400
Weight (g)	24	24	69	89	140	187	163
Max. voltage (phase/neutral)	300 V					600 V	
Rated withstand voltage	3 kV						
Frequency	50/60 Hz						
Intermittent overload	10 x $I_n$ over 1 sec						
Measurement category	CAT III						
Protection degree	IP30 / IK06						
Operating temperature	-10 ... +70°C						
Storage temperature	-25 ... +85°C						
Relative humidity	95% RH non-condensing						
Altitude	< 2000 m						
Connection	Socomec RJ12 cable						

## References

Model	Nominal current range (A)	Real range covered (A)	Pitch (mm)	Reference
TE-18	5 ... 20	0.1 ... 24	18	4829 0500
TE-18	25 ... 63	0.5 ... 75	18	4829 0501
TE-25	40 ... 160	0.8 ... 192	25	4829 0502
TE-35	63 ... 250	1.26 ... 300	35	4829 0503
TE-45	160 ... 630	3.2 ... 756	45	4829 0504
TE-55	400 ... 1000	8 ... 1200	55	4829 0505
TE-90	600 ... 2000	12 ... 2400	90	4829 0506

Accessories	Reference
Coupling link (20 linear assembly parts and 10 for staggered assembly)	4829 0598
5 A CT adapter (max primary current 2000 A / 1 A or 10 000 A / 5 A)	4829 0599
Sealable caps (20 pieces)	4829 0600

RJ12 connection cables	Cable length (m)									
	0.1	0.2	0.3	0.5	1	2	3	5	10	50 m reel + 100 connectors
Number of cables	Reference	Reference	Reference	Reference	Reference	Reference	Reference	Reference	Reference	Reference
1	-	-	-	-	-	-	-	4829 0602	4829 0603	4829 0601
3	4829 0580	4829 0581	4829 0582	4829 0595	4829 0583	4829 0584	4829 0606	-	-	-
4	-	-	-	4829 0596	4829 0588	4829 0589	-	-	-	-
6	4829 0590	4829 0591	4829 0592	4829 0597	4829 0593	4829 0594	-	-	-	-