

NEW  
SINGLE PHASE

# ATyS M

Single and three phase modular Automatic Transfer Switch from 40 to 160 A

SWITCH TO INNOVATION



## SOCOMEC: intelligent changeover systems

As a worldwide leading company in changeover power solutions, SOCOMEC brings a new innovative changeover concept based on switch technology dedicated to single phase or three phase replacement and safety power supply applications from 40 to 160 A.

### **ATyS M:** fully integrated control and automatic changeover functions

SOCOMEC has developed a new concept combining the benefits of switching technology and fast operation with unique control flexibility.

### **ATyS M:** a specific response to IEC or EN 60947-6-1 changeover switching standards

The new **ATyS M** modular changeover system has been designed, tested and proven according to the criteria in the international standard IEC 60947-3 and 60947-6-1. Its compliance with this standard guarantees a quality product which meets switching and changeover applications requirements.



APPLI 184 A

## References

### > 2 pole

#### ATyS M 3s



ATYSM 200 A

230 Vac	
40 A	1323 <b>2004</b>
63 A	1323 <b>2006</b>
80 A	1323 <b>2008</b>
100 A	1323 <b>2010</b>
125 A	1323 <b>2012</b>
160 A	1323 <b>2016</b>

#### ATyS M 6s



ATYSM 201 A

230 Vac	
40 A	1353 <b>2004</b>
63 A	1353 <b>2006</b>
80 A	1353 <b>2008</b>
100 A	1353 <b>2010</b>
125 A	1353 <b>2012</b>
160 A	1353 <b>2016</b>

### > 4 pole

#### ATyS M 3s



ATYSM 023 A

230 Vac	
40 A	1323 <b>4004</b>
63 A	1323 <b>4006</b>
80 A	1323 <b>4008</b>
100 A	1323 <b>4010</b>
125 A	1323 <b>4012</b>
160 A	1323 <b>4016</b>

#### ATyS M 6s



ATYSM 024 A

230/400 Vac	
40 A	1354 <b>4004</b>
63 A	1354 <b>4006</b>
80 A	1354 <b>4008</b>
100 A	1354 <b>4010</b>
125 A	1354 <b>4012</b>
160 A	1354 <b>4016</b>

127/230 Vac	
40 A	1353 <b>4004</b>
63 A	1353 <b>4006</b>
80 A	1353 <b>4008</b>
100 A	1353 <b>4010</b>
125 A	1353 <b>4012</b>
160 A	1353 <b>4016</b>

#### ATyS M 6e



ATYSM 022 A

#### Without communication

230/400 Vac	
40 A	1364 <b>4004</b>
63 A	1364 <b>4006</b>
80 A	1364 <b>4008</b>
100 A	1364 <b>4010</b>
125 A	1364 <b>4012</b>
160 A	1364 <b>4016</b>

127/230 Vac	
40 A	1363 <b>4004</b>
63 A	1363 <b>4006</b>
80 A	1363 <b>4008</b>
100 A	1363 <b>4010</b>
125 A	1363 <b>4012</b>
160 A	1363 <b>4016</b>

#### With communication

230/400 Vac	
40 A	1384 <b>4004</b>
63 A	1384 <b>4006</b>
80 A	1384 <b>4008</b>
100 A	1384 <b>4010</b>
125 A	1384 <b>4012</b>
160 A	1384 <b>4016</b>

127/230 Vac	
40 A	1383 <b>4004</b>
63 A	1383 <b>4006</b>
80 A	1383 <b>4008</b>
100 A	1383 <b>4010</b>
125 A	1383 <b>4012</b>
160 A	1383 <b>4016</b>

## The fully integrated ATS solution

The best of switching and control technology dedicated to changeover applications

### SWITCHING

Two mechanically interlocked power switches.

### OPERATION

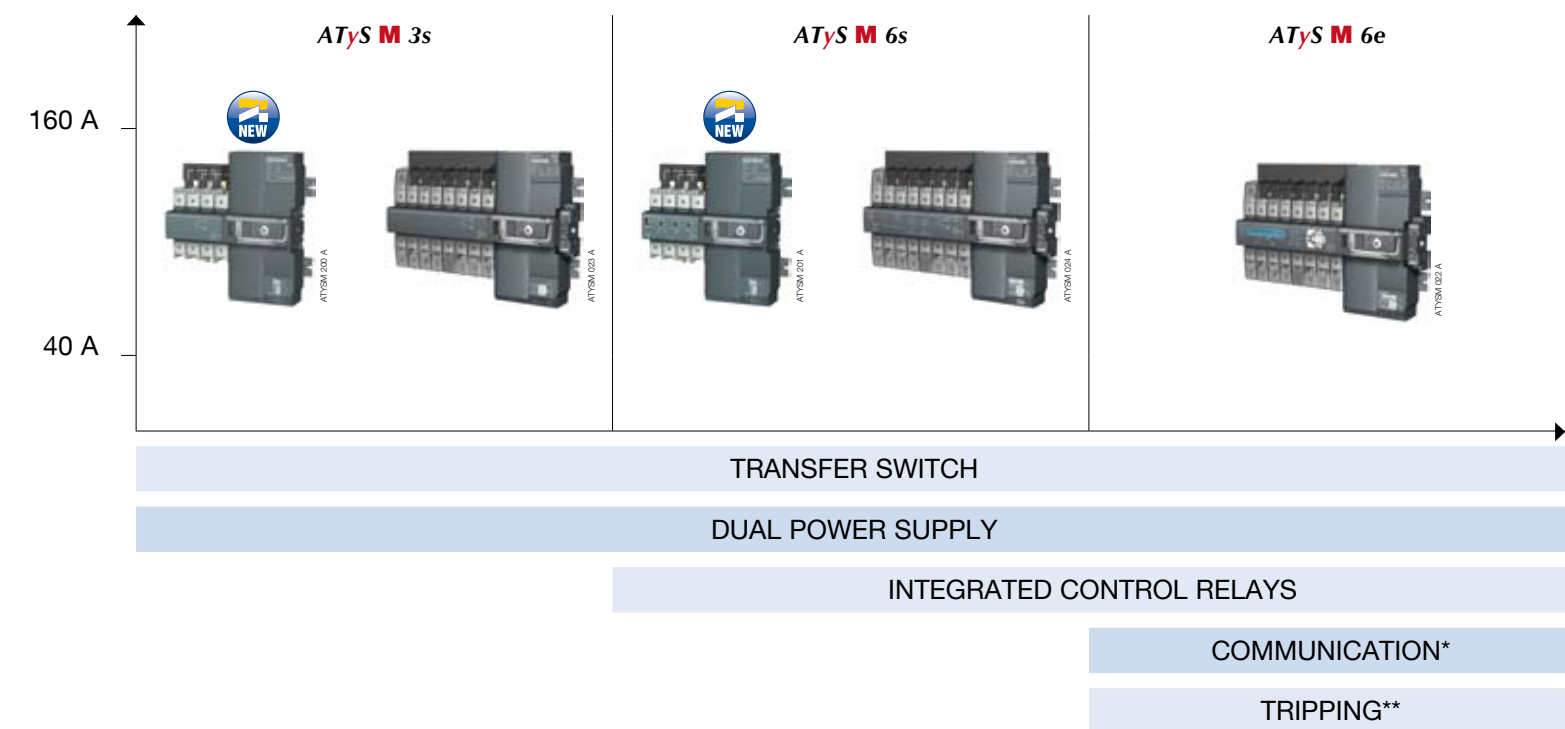
A configurable automatic control associated with an emergency manual operation.

### MONITORING

A built-in configuration and control interface, simple or advanced.

### INSTALLATION

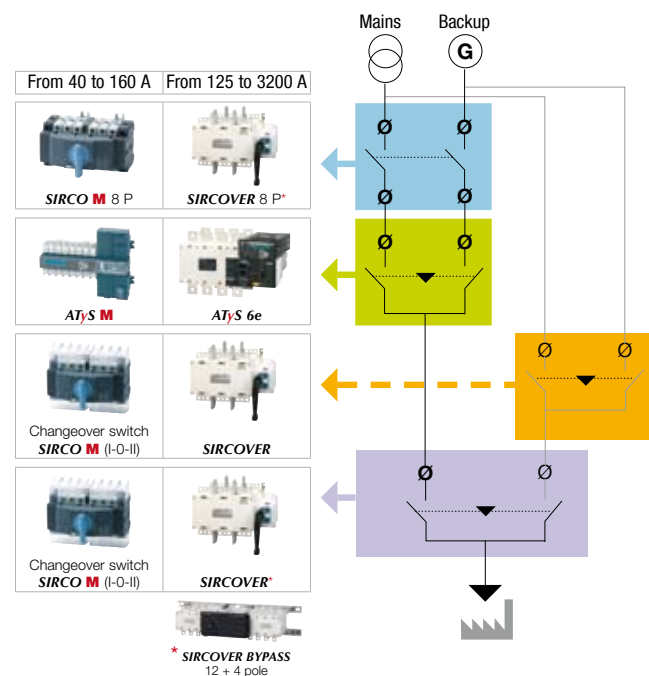
A modular product adapted to any type of enclosure integration.



\* Special version. \*\* Return-to-zero without external power source.

## Additional Socomec changeover & by-pass solutions

### > An ATS BY-PASS range

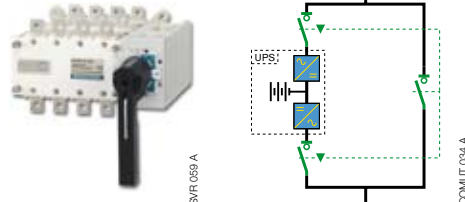


### > An extended ATyS range up to 3200 A\*



\* Also available in offer in enclosure.

### > A BY-PASS range



### > SIRCOVER manual changeover range





# Changeover switching for industrial and commercial low voltage applications

**Six ratings 40/63/80/100/125/160 A**  
**2 or 4 pole**

ATyS M 3s

ATyS M 6s

ATyS M 6e



Electrical operation I - 0 - II

Automatic product

Automatic product

APPLICATIONS	Electrical operation I - 0 - II	Automatic product	Automatic product
Normal / Back-up without automatic controller	•		
Normal / Back-up with built-in automatic controller		•	•
Stable positions	•	•	•
Load changeover	•		
<b>FUNCTIONS</b>			
<b>SUPPLY</b>			
External	•		
Integrated		•	•
<b>OPERATION</b>			
Back-up manual operation of the 3 positions, configurable	•	•	•
Electrical (dry contact) control of positions I, 0 and II	•		•*
Automatic control of positions I, 0 and II		•	•
Return to 0 position feature upon loss of source			•
<b>MONITORING</b>			
3 voltages on networks I and II		•	•
Frequency on networks I and II		•	•
Phase rotation on networks I and II			•
Asymmetry of networks I and II			•
<b>AUTOMATIC CONTROLLER CONFIGURATION</b>			
By potentiometer and micro-switch		•	
By screen + keyboard			•
V <sub>n</sub> , F <sub>n</sub> , V threshold, F threshold		•	•
Driving with or without priority		•	•
Adjustable operating timers		•	•
Control type (impulse or switch/contact)	•		
<b>DISPLAY</b>			
Position, fully visualised breaking	•	•	•
Leds: source status, automatic mode, fault		•	•
Leds: switch positions, supply, tests, control			•
V, F, timers, number of operations, last event			•
<b>REMOTE CONTROL</b>			
<b>Outputs</b>			
Generator set start/stop control		•	•
Product available (not fault and not manual mode)		•	•*
Programmable output (source, availability, fault)			•*
<b>Inputs</b>			
Test on load		•	•*
Retransfer		•	•*
Automatic mode inhibit		•	•*
Other programmable inputs (test off-load, position control, etc.)			•*
<b>Remote control</b>			
Human / Machine Interface (ATyS D10 or D20)			•
RS485 communication (JBUS/MODBUS)			•**

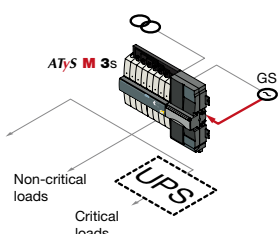
\* 3 inputs / 3 outputs (programmable).

\*\* Product reference is different: the communication by connection RS485 (JBUS/MODBUS) allows to connect until 31 ATyS M with a PC or a programmable machine over 1500 m.

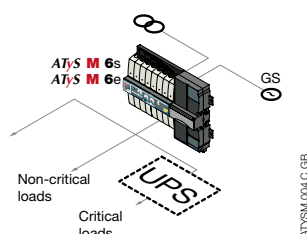
## A product for all changeover applications from 40 to 160 A

### > Generator Network/Set

- Generator set control

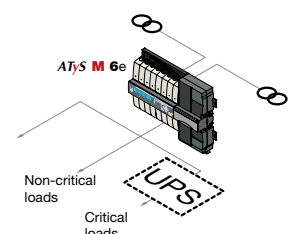
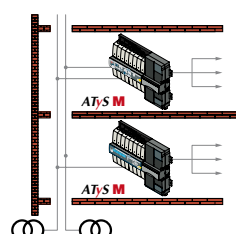


- ATS solution



### > Network/Network

- Building services



# A complete range of accessories

## > Bridging bars

A dedicated, compact accessory providing changeover output common point keeping cable connection capacity complete (protection index IP2X).

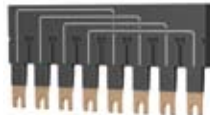
### Single phase



40 to 125 A: **1309 2006**  
160 A: **1309 2016**

ATYSM 198A

### Three phase



40 to 125 A: **1309 4006**  
160 A: **1309 4016**

ATYSM 025A

## > Single pole voltage sensing tap

Provides two terminals per pole for voltage sensing or power supply requirements.

It can be fitted on any pole keeping cable connection capacity complete.



1399 4006

ATYSM 026A

## > Auxiliary contacts

Each product can be equipped with 2 auxiliary contacts.

It integrates one NO/NC contact per position (I, O, II).

Characteristics: 250 VAC/5A maximum.



1309 0001

ATYSM 029A

## > Terminal shrouds (pair)

Provides protection against direct contact with the connection terminals or parts.

A specific front hole enables access to terminals' tightening screws for thermographic measurement or voltage sensing.



2294 4016

ATYSM 027A

## > Sealable cover (for ATyS M 6s)

Controls settings cover to avoid ATyS M 6s parameters access due to a sealable facility.

### Single phase



1359 2000

ATYSM 199A

### Three phase



1359 0000

ATYSM 043A

## > Remote interfaces ATyS D10 or D20 (for ATyS M 6e)

To display source availability and changeover state on the front of a panel.

RJ45 cable connection.



ATYS 564 C

1599 2010



ATYS 565 C

1599 2020

## HEAD OFFICE

### SOCOMEK GROUP

S.A. SOCOMEC capital 11 303 400 €  
R.C.S. Strasbourg B 548 500 149  
B.P. 60010 - 1, rue de Westhouse  
F-67235 Benfeld Cedex - FRANCE

## INTERNATIONAL SALES DEPARTMENT

### SOCOMEK

1, rue de Westhouse - B.P. 60010  
F - 67235 Benfeld Cedex - FRANCE  
Tel. +33 (0)3 88 57 41 41 - Fax +33 (0)3 88 74 08 00  
info.scp.isd@socomec.com

[www.socomec.com](http://www.socomec.com)

Non contractual document. © 2010, Socomec SA. Tous droits réservés.

