

# Air conditioner

## Thermal regulation

clima\_013\_a\_1\_cat



Front-mounted air conditioner

clima\_014\_a\_1\_cat



Roof-mounted air conditioner

### The solution for

- > Automation equipment
- > Electrical distribution



### Strong points

- > TÜV - IP54

### Conformity to standards

- > EN 60204-1
- > DIN 3168

### Available on request

- > Alarm using thermostat
- > Alarm for obstructed filter
- > Semiflush assembling frame
- > Other colours
- > Customised dimensions
- > Stainless steel enclosure
- > Specific cooling powers
- > Specific voltages and frequencies

## Function

SOCOMEK air conditioners ensure the proper air cooling inside the cabinet, in premises with temperatures up to 50 °C.

## General characteristics

- Cooling fluid R134A without CFC.
  - Sheet metal enclosure - colour RAL7035.
  - Fan mounted on foam tape with built-in thermal protection.
  - Metallic filter on the inlet of the external air circuit.
  - Low maintenance system from 500 W as filter maintenance is not required.
  - Condensation evaporation device from 500 W on.
  - Safety pressure controller on air conditioner from 1400 W.
  - Regulation by thermostat pre-set at 35 °C.
  - Separation of inlet and outlet air circuits.
- **Range**
  - 5 models from 330 to 2700 W.
- Standard equipment**
- Self adhesive seal.
  - Assembling and maintenance user's guide.
  - Drilling template.
  - 3 meter power supply cable.

## References

Cooling capacity L35 L35 (W) <sup>(1)</sup>	Front-mounted air conditioner Reference	Roof-mounted air conditioner Reference
330	5198 2030	5199 1030
500	5198 2050	5199 1050
1400	5198 2140	5199 1140
2000	5198 2170	5199 1200
2700	5198 2270	5199 1270

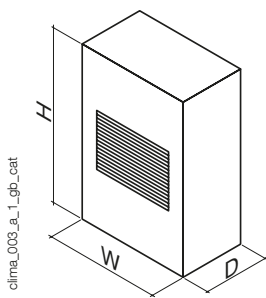
<sup>(1)</sup> Other configurations: Please consult us.

## Characteristics

Cooling capacity L35 L35 (W) <sup>(1)</sup>	330	500	1400	2000	2700
Cooling capacity L35 L50 (W)	270	410	1170	1700	2300
Absorbed power L35 L50 (W)	240	410	860	1200	1570
Min. temperature of enclosure (°C)	25	25	25	25	25
Max. temperature of enclosure (°C)	45	45	45	45	45
Min. ambient temperature (°C)	20	20	20	20	20
Max. ambient temperature (°C)	55	55	55	55	55
Protection degree	IP54	IP54	IP54	IP54	IP54
Power supply voltage (VAC)	230	230	230	230	230
Power supply frequency (Hz)	50 / 60 Hz	50 / 60 Hz	50 / 60 Hz	50 / 60 Hz	50 / 60 Hz

(1) Other configurations: Please consult us.

## Dimensions



Cooling capacity L35 L35 (W)	Type	H (mm)	W (mm)	D (mm)	Weight (kg)	Figure
330	Roof-mounted	180	476	324	17	fig. 1
500	Roof-mounted	335	600	325	29.5	fig. 2
1400	Roof-mounted	450	600	415	48	fig. 3
2000	Roof-mounted	450	600	415	51.5	fig. 3
2700	Roof-mounted	480	800	465	74.5	fig. 4
330	Front-mounted	443	324	206	17	fig. 5
500	Front-mounted	642	313	223	23	fig. 6
1400	Front-mounted	912	410	248	46	fig. 7
2000	Front-mounted	1005	409	263	48	fig. 8
2700	Front-mounted	1217	511	347	75	fig. 9

Fig. 1

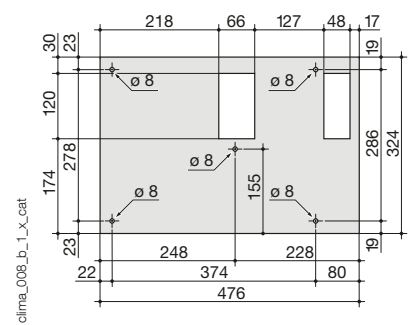


Fig. 2

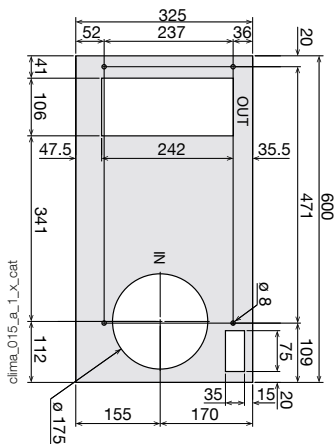


Fig. 3

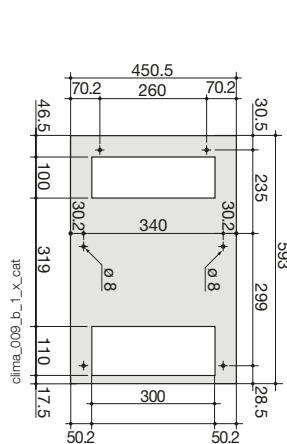


Fig. 4

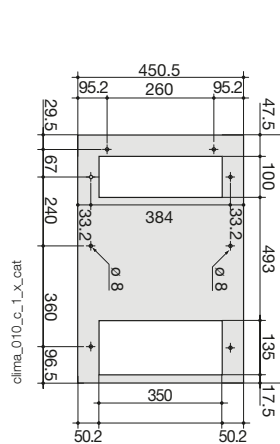


Fig. 5

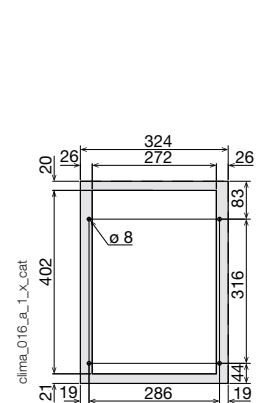


Fig. 6

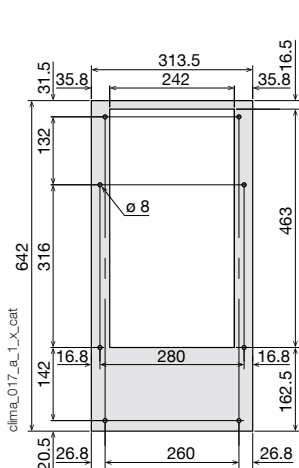


Fig. 7

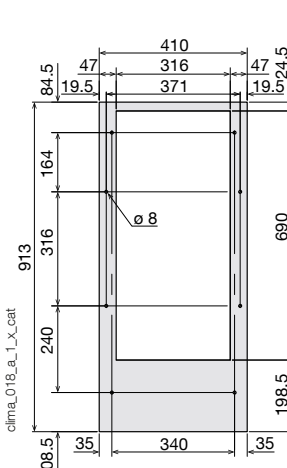


Fig. 8

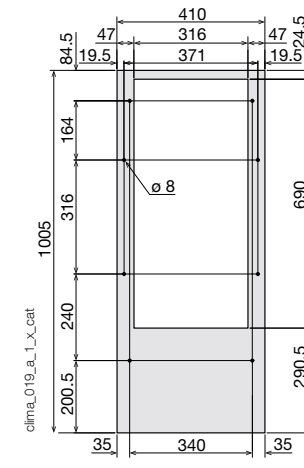


Fig. 9

